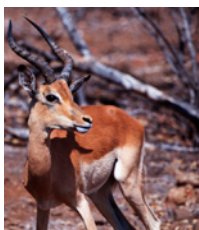
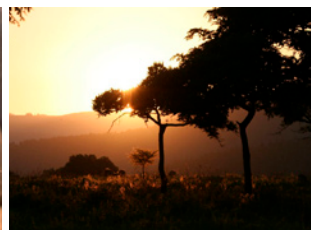
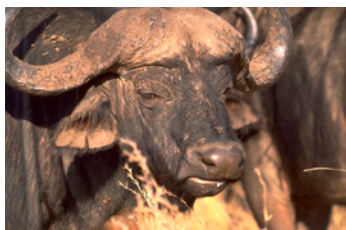
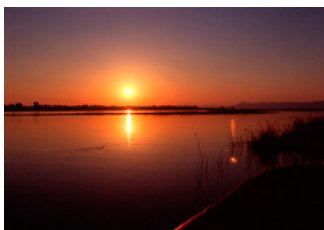
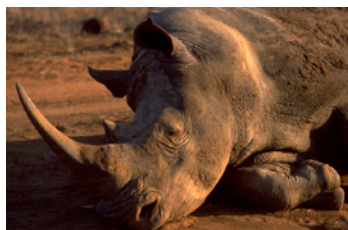


comanis foundation

Annual report 2006/2007

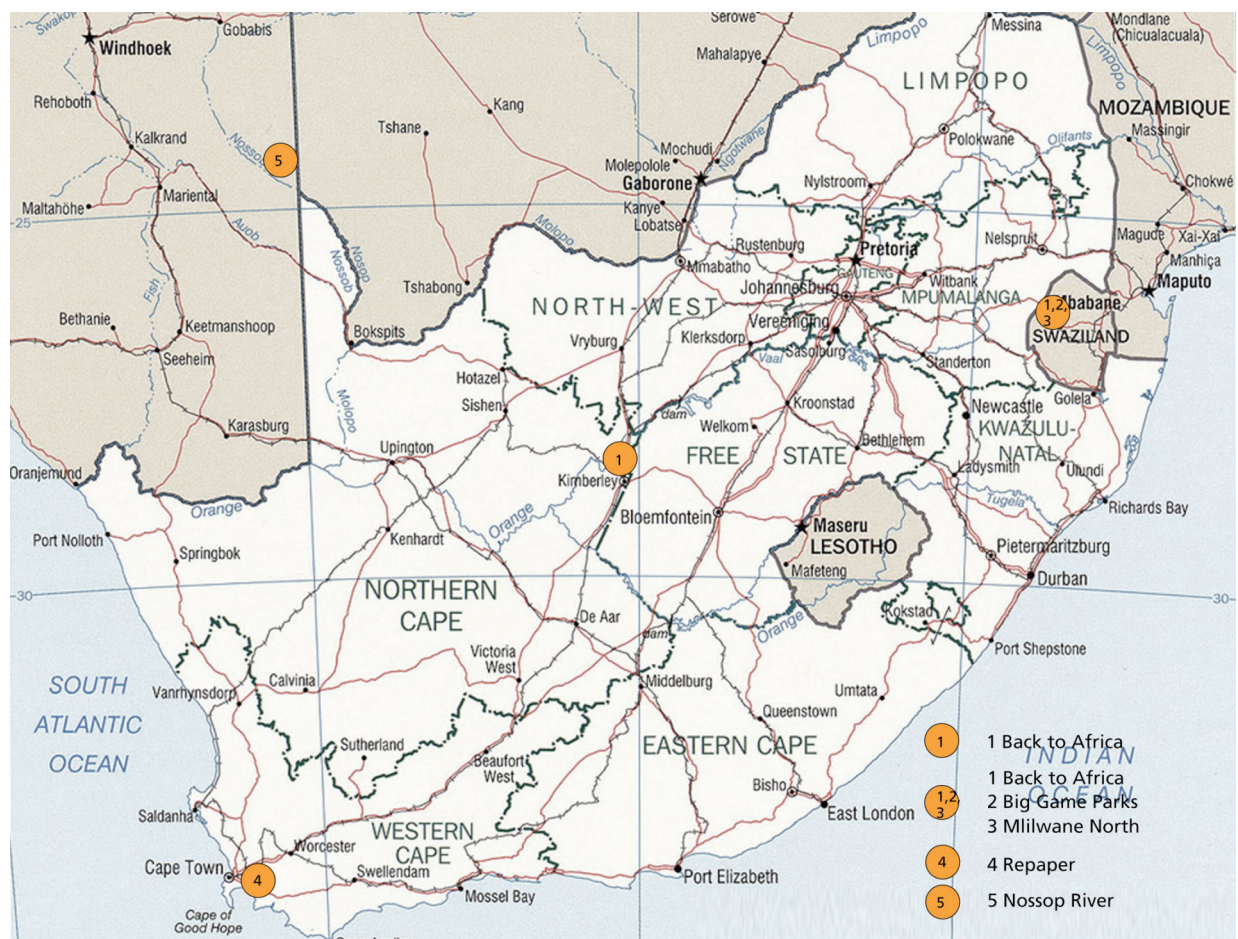


President's Report

The year of founding of the Comanis Foundation was, above all, characterised by the establishment of its various structures, and administrative work in the first six months. After the successful founding, the Swiss Federal Supervisory Board for Foundations, in its letter dated the 24 August 2006, confirmed its acceptance of a supervisory function for the foundation.

During the first year, the foundation board members met at various meetings which were primarily concerned with agreeing a definitive structure for the foundation. However the projects which had already been supported by the various foundation council members prior to the establishment of the foundation were also continued. These are the 'Back to Africa' (South Africa/Swaziland) and the 'Big Game Park' (Swaziland) projects.

These were augmented by the new 'Repaper' (South Africa) and 'Mlilwane North' (Swaziland) projects, as well as the first contacts with a possible project in Namibia (Nossop River Project).



Projects in southern Africa benefiting from Comanis support

The experiences gathered from the various projects show that the strategy pursued by Comanis will also be the right one over the long term.

Contribution funds are available in principle, even though only accessible at considerable expense.

The prime objective must continue to be allowing know-how (help towards self-help) to flow into individual projects.

- Comanis Foundation as a catalyst
Networking of different partners, interdisciplinary collaboration
- Comanis Foundation in project management
Support in project management and process definition
- Monitoring by the Comanis Foundation
Regular on-site quality checks of the prescribed project aims

This strategy allows Comanis' strengths to exert the greatest impact: Long-term good contacts and optimal on-site networking in combination with the best specialist qualification of foundation council members and staff.

The following projects demonstrate this clearly.

Back to Africa:

After three successful shipments of antelopes (4 Sable and 7 Roan antelopes) in the last three years and the successful re-settlement of these antelopes in Kimberly, South Africa and in the Big Game Park, Swaziland, a further shipment of four Roan antelopes was scheduled for this year (2006).



Feeding of Roan antelopes from Marwell Zoo, England, in the Mlilwane Game Sanctuary, Swaziland

Hamish Currie from Back to Africa had several discussions with Marwell Zoo regarding this. However these were unfortunately broken off suddenly at the end of 2006 as the newly-appointed head of the zoo no longer wished to honour the previously agreed arrangements. After repeated further discussions, any hopes that Back to Africa would once again take delivery of a further four Roan antelopes from Marwell Zoo were conclusively dashed.

As a result of this, the President and Hamish Currie (Director, Back to Africa) travelled to Prague and then on to Dvur Kralové at the end of March in order to hold discussions with the director of the local zoo, Dana Holeckova, regarding a possible donation of Roan antelopes.

These discussions were successful and the parties agreed that, during the course of the year, four (female) Roan antelopes, as well as possibly two (male) Sable antelope were to be transported to Swaziland. Comanis will bear the costs for the transport of these animals to Swaziland.



Roan antelope in Dvur Kralové Zoo, Czech Republic

On the occasion of her visit to the Mlilwane Game Sanctuary in spring 07, the President had the great pleasure of observing the advances in the successful immunisation of zoo animals, and also the increase to the herd by a further four baby Roan antelopes (three of which were female). The herd has now grown to 15 animals within two years, which correlates to a more than doubling of the number of animals originally transported to Swaziland.

The transport of four female Roan antelopes from Prague during the course of the year (07) means that this project can now be concluded successfully.

Big Game Parks (BGP):

The financial support of the BGP project in connection with the re-settlement of the threatened small antelopes in the Park Mlilwane Game Sanctuary which is especially suited to this was also continued this year. The contribution enabled the purchase of additional antelopes, such as Oribies, Klipspringer, Red Duiker, Mountain Rheedbuck antelopes etc., as well as the continued support of the current project with its attendant costs.

The already established population has developed well, in spite of some losses of Oribie antelopes to pythons. However, the successful re-settlement of the various species of antelope in Swaziland requires even more animals in order that the required number for successful breeding is reached.



A Suni antelope in the Mlilwane Game Sanctuary

The Sunis, some of which were transported to Mkhaya, have developed especially well. The animals there have increased in such numbers that the second group of animals has already been able to be released into the wilderness.

The successful conclusion of this project is however not yet foreseeable as the majority of animals need to have continued protection in secured enclosures against all predators, since their numbers are as yet inadequate.

The size of the park has also become an important subject in relation to this. The non-fenced portion of the Mlilwane Game Sanctuary would contribute an important role in the successful re-settlement of these small antelopes, as well as Roan antelopes.

Mlilwane North:

At the start of 2007, Comanis received an inquiry from the JT International Foundation (Japanese Tobacco International); they were interested in the project in Swaziland and wished to know whether this could be discussed at a joint meeting.

On 17 January 07, this meeting took place with Hans Klaus (Head of Corporate Philanthropy) of JTI and the President of Comanis and it was agreed to inspect this project together, shortly after Easter.

During this visit in the spring of 07, both representatives from the JTI Foundation, Hans Klaus and Elodie Ahr, were able to see the necessity for fencing in the northern part of this park. It would enable this section to be made useable for the park.



The as yet unfenced Mlilwane North Reserve

The following project idea was formulated over the course of various discussions. To develop the fencing in of the northern section (64 km), including the local infrastructure, in a three-year project with the support of the JTI Foundation. Comanis in conjunction with BGP has drawn up a provisional business plan to this end, which will be discussed with JTI in mid July 2007. This project will from now on be known as the Mlilwane North project.

Repaper Project:

The support given to the Umnqophiso kindergarten in the Lwandle Township in the vicinity of Sommerset West in South Africa resulted in a new project involving the mothers of children who attend the kindergarten.

A work project was developed in conjunction with an artist from Berne which made independent home-based work possible for the women. Jewellery is made from recovered paper using simple additional materials (recovered paper and glue). During our visit in the spring of 2006, around 12 women were taught how to make paper “beats” in a two-day workshop.

The production of these “beats” has in the meantime supported approx. 12 families for one year.



Workshop in spring 2007 with 15 women and men in Lwandle Township in the vicinity of Sommerset West

A further two-day workshop attended by 15 women and a few men was held in spring 2007. The main aim here was to teach the participants the process involved in the complete manufacture of the chains.

Next year, it is planned to further improve the structure of the project, however, above all else, a local person needs to be found who is able to oversee this project in a professional manner.

Nossop River:

During the visit to the Kgaladi Transfrontier Park in spring 07, an interesting new project was discussed with the local ranger and Anton van Schalkwyk from Gariep River which concerned the Nossob River region in Namibia.



The newly-opened border post of the Kgaladi Transfrontier Park to Namibia. (A park spanning three countries)

This region directly borders the Transfrontier Park and is regarded as extremely arid and non-arable, which makes it hardly suitable for agriculture. Nevertheless, there are a few farms in this area that barely survive economically. An interesting proposition would be to purchase this land from the farmers with the help of the government (also with the help of SANPark) as well as of private individuals, and then to use the land as an extension of the Transfrontier Park into Namibia.

Administrative matters:

Various donation requests:

A range of different requests for donations were received by the Comanis Foundation throughout the course of the year. These applications were examined and a response was then sent to the applicants. As the foundation currently wishes to concentrate its efforts above all on existing projects in Africa, all of the applications were examined as to whether they would tie in sensibly with these projects.

First annual meeting:

The first annual general meeting has held on 20 July 2007.

Expression of thanks:

The President wishes to thank all the foundation council members for their work and for their financial support.

Further information on the Comanis Foundation and its supported projects is available from the following person:

Corinne Itten Foundation Council President +41 31 333 61 61 itten@gim.ch